



# DuPont Controlled Environments

2022 Product catalog



# DuPont Controlled Environments garments

Quality, comfort, and durability for your cleanroom. For more than 200 years, DuPont has been putting science to work by creating sustainable solutions essential to a better, safer, healthier life for people everywhere. One of the areas in which safety and health are of paramount importance is in cleanrooms and controlled environments.

DuPont understands your need to do everything possible to improve productivity and reduce risk in your controlled environment. The DuPont Controlled Environments (CE) portfolio offers a comprehensive selection of single-use cleanroom apparel and accessories designed for use in pharmaceutical, medical device, biotech, and electronic settings that require high standards for particle and microbiological contamination control.

DuPont™ Tyvek® garments have a long history of use in cleanrooms due to their excellent barrier to particles,

microorganisms, and non-hazardous liquids. They offer an ideal balance of protection, durability, and comfort. They are available in many styles for different cleanroom and controlled environment applications.

With the DuPont Controlled Environments offering, you get the advantage of a wide range of proven, science-based solutions that help keep your cleanroom environment protected.



## Contents

DuPont Controlled Environments garments	2
DuPont garment material	4
Controlled environments apparel selection guide	5
How to interpret DuPont product part numbers	7
Tyvek® IsoClean® garments	8
Gowning recommendations	9
Garment processing and packaging options	11
The DuPont CE garment portfolio	12
Clean-processed and sterile garments	18
Sterile garments	21
Clean-processed garments	24
Non-sterile garments	27
Sizing chart for DuPont Controlled Environments garments	39
Featured products summary	40
Tyvek® protective apparel recycling program	43

# DuPont garment material

## Tyvek® sterile garments

The highest performing garments in our product line are made from Tyvek®, which has been used to make high-quality cleanroom garments for more than 25 years. Tyvek® is made by DuPont with a proprietary flash-spinning process that creates continuous fibers of high-density polyethylene that are randomly distributed and non-directional.



Tyvek® is tough, yet lightweight and soft.



Tyvek® offers an ideal balance of protection, durability, and comfort.



Tyvek® acts as a breathable barrier against particles and bacteria.



Tyvek® repels aqueous liquids and liquid aerosols.



Tyvek® is inherently low linting and abrasion resistant.

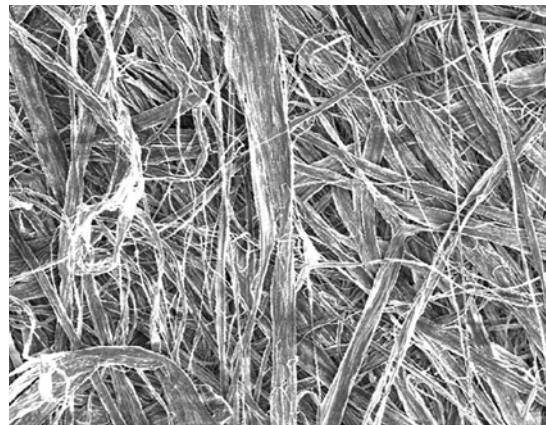


Image shown at 200x magnification.

**Tyvek® is made with a unique flash-spinning process that creates a tortuous path for particles.**

## Single-use garments from DuPont

DuPont sterile cleanroom garments, designed for single use, offer meaningful advantages in today's challenging cleanroom environments, including:

- **Quality**—single-use garments are not subjected to multiple cycles of wearing, laundering, and sterilization, so fabric barrier and strength are consistent and predictable.
- **Flexibility**—the DuPont single-use apparel program allows you to order only the quantities that you plan to use, which offers flexibility as your needs change.
- **Cost control**—single-use garments help eliminate budget uncertainties associated with garment repair, damage, and loss, helping you to better predict expenditures.

## DuPont quality systems for cleanroom garments

DuPont single-use garments for controlled environments offer the following standards of quality:

- The DuPont Controlled Environments quality management system is ISO 9001:2015 registered.
- Tyvek® IsoClean® sterile garments have a sterility assurance level (SAL) of 10<sup>-6</sup>. Radiation doses are validated in accordance with ANSI/AAMI/ISO 11137 through bioburden and dose verification testing.
- Tyvek® IsoClean® sterile garments are gamma irradiated in a facility that is registered by ISO 13485 quality standard and adheres to the requirements of ANSI/AAMI/ISO 11137.
- A Certificate of Sterility and a Certificate of Compliance come with every shipment of sterile single-use garments.
- Dose audits are conducted quarterly to maintain dose validation.
- Customers are invited to audit our manufacturing and sterilization facilities.
- Quality documentation is readily available and accurate when requested to help meet customer requirements.
- Lot traceability is maintained through garment manufacturing, processing, and sterilization.

# Controlled environments apparel selection guide

When it comes to working in a broad range of controlled environments, specifiers have many product options from which to select. The process to understand which option matches a given environment can be confusing and taxing. DuPont has tried to help reduce some of that burden by providing a complete line of products and information to help guide specifiers through their selection process.

To get the most out of your cleanroom apparel, it is necessary to understand where each product can be used. To provide a quicker overview of our products and where they are intended for use, we developed the simple guide below. Our goal is to provide the appropriate DuPont product that is suitable for a given environment or hazard.

## Fabric performance features

Fabric	Available sterile	Particle barrier	Non-hazardous liquid barrier	Comfort	Durability	Static dissipation†	Particle shedding	Strengths
Tyvek® IsoClean® flashspun polyolefin, clean-processed	Yes CS option	✓+	✓	✓+	✓+		✓+	Ideal combination of protection, durability, and comfort
Tyvek® IsoClean® flashspun polyolefin	Yes OS option	✓+	✓	✓+	✓+	✓+**	✓+	Ideal combination of protection, durability, and comfort
Tyvek® Micro-Clean® 2-1-2 flashspun polyolefin	Yes OS option	✓+		✓+	✓+	✓**	✓+	The protection, durability, and comfort of Tyvek® with a unique blue color
DuPont™ ProClean® microporous films	No	✓+*	✓+*	✓	✓	✓+	✓	Effective liquid barrier; low cost

Comparison within the DuPont portfolio:

✓+ Best

✓ Better

(Blank) Not recommended

\* Barrier properties may be compromised through use.

\*\* Antistatic performance may be reduced for sterile products.

† Nuisance static.

# Controlled environments apparel selection guide

## DuPont Controlled Environments garments: Tyvek® IsoClean®, Tyvek® Micro-Clean® 2-1-2, ProClean®

	Tyvek® IsoClean®				Tyvek® Micro-Clean® 2-1-2		ProClean®**	Considerations
	Clean-processed sterile	Sterile	Clean-processed non-sterile	Bulk non-sterile	Sterile	Non-sterile**	Non-sterile	
<b>Environments</b>								
ISO Class 5 Aseptic Cleanrooms (Former FED-STD-209E; Class 100)	✓+	✓			✓			Tyvek® IsoClean® sterile garments offer excellent cleanliness, barrier, and sterility assurance level.
ISO Class 6, 7, and 8 Bioburden Control Areas (Former FED-STD-209E; Class 1000, 10,000 and 100,000)	✓+	✓+			✓+			Tyvek® IsoClean® sterile garments offer excellent cleanliness, barrier, and sterility assurance level.
ISO Class 6, 7, and 8 Cleanrooms (Former FED-STD-209E; Class 1000, 10,000 and 100,000)			✓+	✓+	✓+		✓	Tyvek® is durable, low-linting and provides an inherent particle barrier. Clean processing and bound seams should be considered for more critical environments.
<b>Hazards</b>								
Non-hazardous dry particles	✓+	✓+	✓+	✓+	✓+	✓+	✓+	Tyvek® provides an inherent barrier against small particles. Bound seam garments offer a higher level of protection than serged seam garments.
Non-hazardous, light liquid splash	✓	✓	✓	✓			✓+	ProClean® provides an effective barrier against a variety of common non-hazardous liquids.
Hazardous powders Notice: DuPont Controlled Environments garments should not be used in potentially explosive or flammable environments.	✓+	✓+	✓+	✓+				Use bound seam garments when working with hazardous powders.
Hazardous liquid splash Examples: organic solvents, caustics								Please refer to our DuPont™ Tychem® product line for liquid and vapor chemical protection.
Electric arc, industrial fire hazard, welding								Please refer to DuPont™ Nomex® for flame-resistant apparel. Controlled environment garments are not suitable for firefighting activities, nor for protection from hot liquids, steam, molten metals, welding, electric arc, or thermal radiation.
								<b>Do Not Use</b>

Comparison within the DuPont portfolio:

✓+ Best

✓ Better

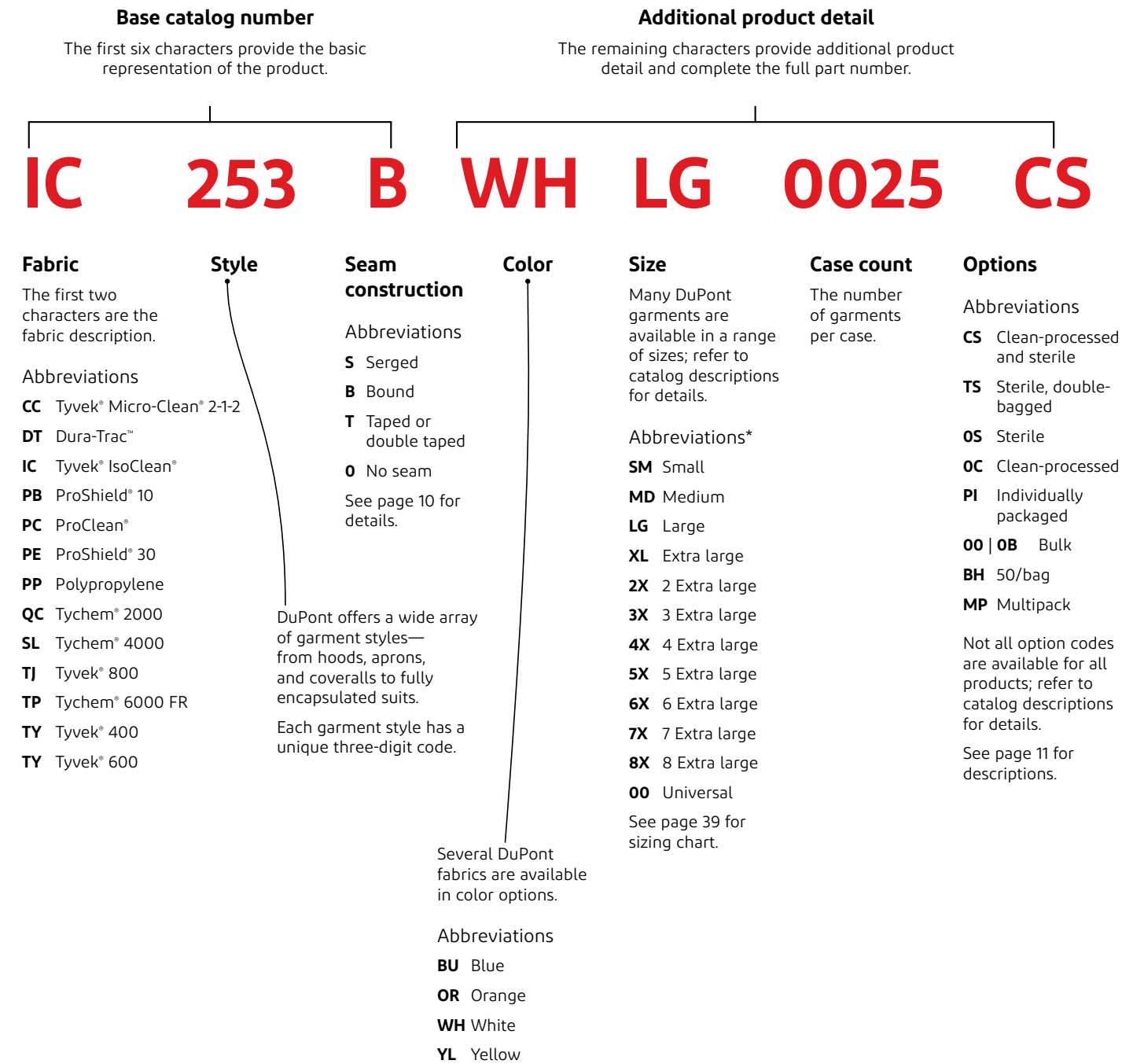
(Blank) Not recommended

\* Barrier properties may be compromised through use.

\*\* Packaged individually.

# How to interpret DuPont product part numbers

To simplify ordering and inventory management, we developed a simple, logical, and intuitive product numbering system. Using only 16 characters, each part number comprises abbreviations that provide all the information you need.



\*Not all sizes are available in all styles.

# Tyvek® IsoClean® garments

## For ISO 4/5 (class 10/100) and ISO 7/8 (class 10,000/100,000) controlled environments

One of the most popular products in the DuPont Controlled Environments portfolio, Tyvek® IsoClean® clean-processed and sterile single-use garments offer an ideal balance of protection, durability, and comfort.

Tyvek® IsoClean® garments are available sterile and non-sterile in a wide variety of styles, such as coveralls, frocks, lab coats, hoods, gowns, bouffants, shoe and boot covers, and sleeve protectors.

For more information on Tyvek® IsoClean® garments, see page 19 of this catalog.

### Gowning for ISO 5 controlled environments—per IEST-RP-CC003

**Clean and sterile bouffant**  
Tyvek® IsoClean®  
IC729SWH000250CS

**Clean and sterile hood**  
Tyvek® IsoClean®  
IC668BWH000100CS

**Clean and sterile coverall**  
Tyvek® IsoClean®  
IC253BWHXX0025CS

Garments folded to facilitate aseptic donning

Bound seam garments offer better particle barrier than serged seams.

**Clean and sterile boot cover**  
Tyvek® IsoClean®  
IC458BWHXX0100CS

Elastic wrists and ankles are covered by garment materials so the elastic is not exposed.

Gripper™ soles offer a higher level of slip resistance than standard PVC soles.



### Gowning for ISO 7/8 controlled environments—per IEST-RP-CC003

**Bouffant**  
Tyvek® IsoClean®  
IC729SWH0002500B

**Frock with snaps**  
Tyvek® IsoClean®  
IC270BWHXX003000

**with zipper**  
Tyvek® IsoClean®  
IC264SWHXX00300B

**Shoe cover with Gripper™ sole**  
Tyvek® IsoClean®  
IC451SWHXX01000B



# Gowning recommendations

## ISO 14644-1 air cleanliness classes for cleanrooms and clean zones

ISO classification number	0.1 μm	0.2 μm	0.3 μm	0.5 μm	1.0 μm	5.0 μm	SI	English former FED-STD-209E
ISO Class 1	10							
ISO Class 2	100	24	10					
ISO Class 3	1,000	237	102	35			M 1.5	1
ISO Class 4	10,000	2,370	1,020	352	83		M 2.5	10
ISO Class 5	100,000	23,700	10,200	3,520	832		M 3.5	100
ISO Class 6	1,000,000	237,000	102,000	35,200	8,320	293	M 4.5	1,000
ISO Class 7				352,000	83,200	2,930	M 5.5	10,000
ISO Class 8				3,520,000	832,000	29,300	M 6.5	100,000
ISO Class 9				35,200,000	8,320,000	293,000		

### IEST-RP-CC003 minimum gowning recommendations

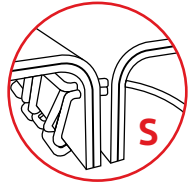
	ISO Class 8 (Class 100,000)	ISO Class 7 (Class 10,000)	ISO Class 6 (Class 1,000)	ISO Class 5 (Class 100)	ISO Class 4 (Class 10)
Hair cover	•	•	•	•	•
Hood				•	•
Face mask				•	•
Frock	•	•			
Coverall			•	•	•
Shoe covers	•	•			
Boots			•	•	•

### A, B, C, D rating table

Grade	Maximum permitted number of particles equal to or greater than 0.5 μm	
	At rest equal to or greater than 0.5 μm per m <sup>3</sup>	In operation equal to or greater than 0.5 μm per m <sup>3</sup>
A	3,520	3,520
B	3,520	352,000
C	352,000	3,520,000
D	3,520,000	Not defined

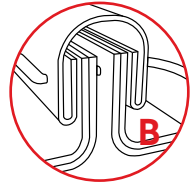
## Gowning recommendations

Seam construction—even the best protective fabrics are useless without strong, tight seams.



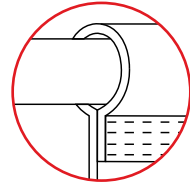
### Serged

A seam produced when three threads are interlocked around the raw edges of two pieces of material for a strong, stress-resistant seam.



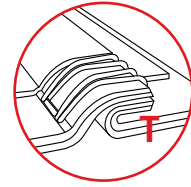
### Bound

Tightly serged with a reinforced outer binding to increase seam strength and barrier. For potential misting exposure of non-hazardous liquids or particle penetration through the seam.



### Covered elastic

Elastic covered by garment material so elastic is not exposed.



### Taped

Both sewn and taped to provide strong chemical resistance against heavy liquid splashes and tough seam stress. A sewn seam is covered with a strip of compatible material by heat-sealing.



### DuPont™ SafeSPEC™—we're here to help

Our powerful web-based tool can assist you with finding the appropriate DuPont garments for chemical, controlled environment, thermal, and mechanical hazards.

[safespec.dupont.com](http://safespec.dupont.com)



### Certified Industrial Hygienist team

A DuPont Certified Industrial Hygienist can conduct a job hazard assessment to help you determine the best DuPont garment for a specific hazard.

## Garment processing and packaging options

### Sterile

#### Clean-processed and sterile (option code CS)

Garments are specially processed to minimize particle shedding, then folded to aid in aseptic donning and individually packaged in an ISO Class 4 cleanroom. The case quantity is packaged in a cardboard case with two polyethylene liners. Sterility is achieved by gamma irradiation. Radiation dosage is validated in accordance with ISO 11137 for an SAL of 10<sup>-6</sup>.

#### Sterile (option code OS or TS)

Garments available with the OS option code are folded to aid in aseptic donning and individually packaged. Garments available with the TS option code are folded and double-bagged individually. The case quantity is packaged in a cardboard case with two polyethylene liners.

Some sterile items are folded and individually packaged in an ISO Class 5 cleanroom (see garment data sheet). Sterility is achieved by gamma irradiation. Radiation dosage is validated in accordance with ISO 11137 for an SAL of 10<sup>-6</sup>.



Opaque sterile pouch packaging features a no-smear label.

### Non-sterile

#### Clean-processed (option code OC)

Garments are specially processed to minimize particle shedding and individually packaged in an ISO Class 4 cleanroom. The case quantity is packaged in a cardboard case with two polyethylene liners.

#### Individually packaged (option code PI)

Garments are individually packaged in an ISO Class 5 cleanroom. The case quantity is packaged in a cardboard case with two polyethylene liners.

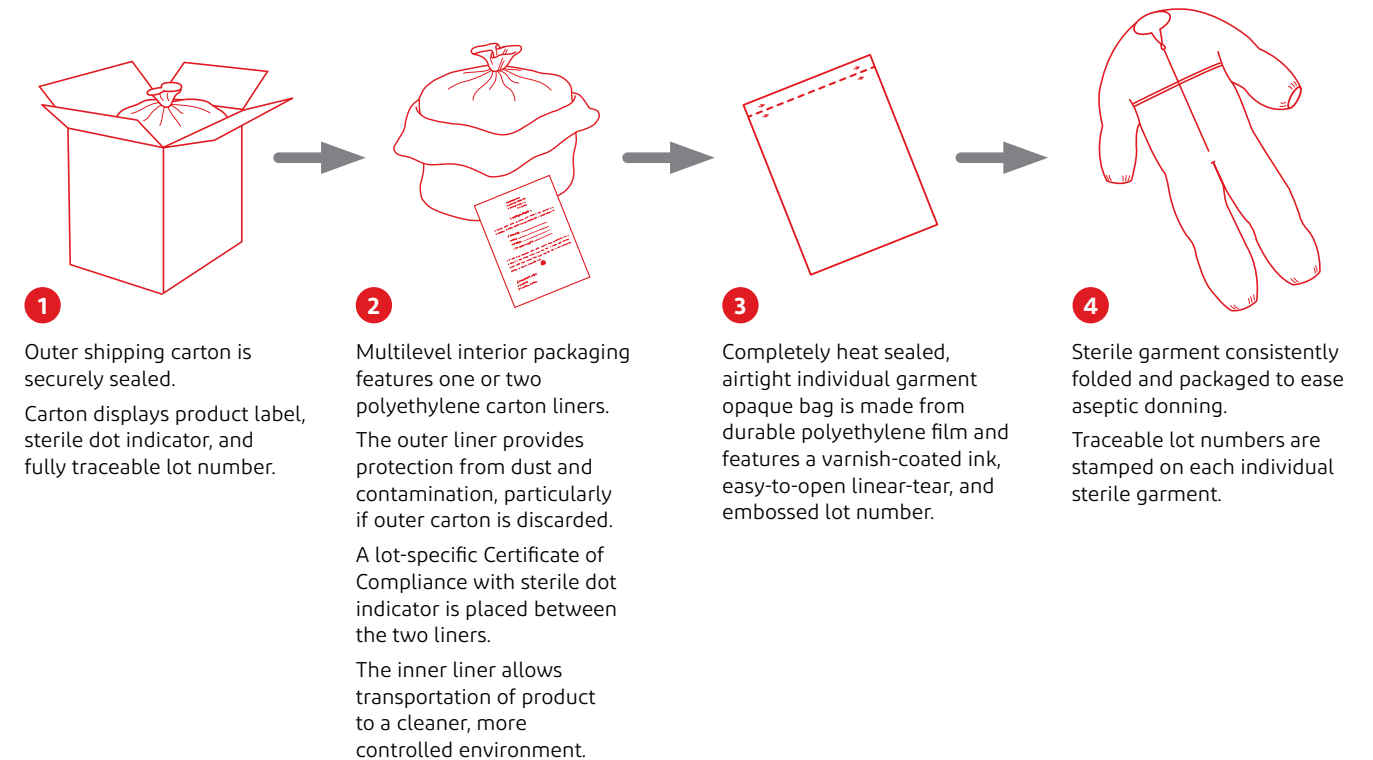
#### Bulk (option code OB or OO)

Case quantities are packed in a cardboard case with two polyethylene liners. Tychem® garments are packed in a cardboard case with a single polyethylene liner.

#### BH 50/bag MP Multipack

Note: Individual packaging for shoe and boot covers indicates that each pair has its own sealed bag. Cuff tapes may have subgroupings of individually packaged items within the case.

### Sterile packaging process—Critical assurance sterile apparel multilevel packaging



# The DuPont CE garment portfolio

To help you select the right garments for your controlled environment, please select garment type, sterile or non-sterile, and your preference for either clean-processed, bulk or individually packaged.

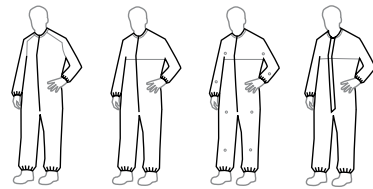
## Clean-processed and sterile garments (CS)

### Coveralls—hooded



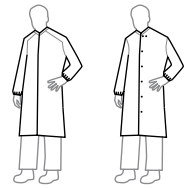
Tyvek®  
IsoClean®  
IC105  
p. 19

### Coveralls—without hood



Tyvek® IsoClean® IC182 p. 19  
Tyvek® IsoClean® IC253 p. 19  
Tyvek® IsoClean® IC254 p. 19  
Tyvek® IsoClean® IC255 p. 19

### Frocks and lab coats



Tyvek® IsoClean® IC264 p. 20  
Tyvek® IsoClean® IC270 p. 20

### Hoods and bouffants



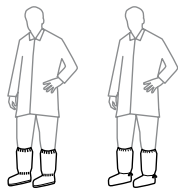
Tyvek® IsoClean® IC666 p. 20  
Tyvek® IsoClean® IC668 p. 20  
Tyvek® IsoClean® IC729 p. 20

### Sleeves



Tyvek® IsoClean® IC501  
p. 20

### Shoe and boot covers

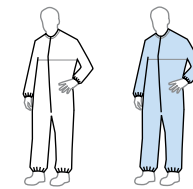


Tyvek® IsoClean® IC447 p. 20  
Tyvek® IsoClean® IC458 p. 20

# The DuPont CE garment portfolio

## Sterile garments (OS)

### Coveralls—without hood



Tyvek® IsoClean® IC253 p. 22  
Tyvek® Micro-Clean® 2-1-2 CC252 p. 23

### Sleeves



Tyvek® IsoClean® IC501  
p. 22

### Coveralls—hooded



Tyvek® IsoClean® IC108  
p. 22

### Hoods and masks



Tyvek® IsoClean® IC669 p. 22  
Tyvek® IsoClean® 9820 p. 22

### Frocks and lab coats



Tyvek® IsoClean® IC262  
p. 22

### Shoe and boot covers



Tyvek® IsoClean® IC457  
p. 22

# The DuPont CE garment portfolio

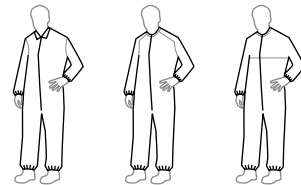
## Clean-processed garments (OC)

### Coveralls—hooded



Tyvek®  
IsoClean®  
IC105  
p. 25

### Coveralls—without hood

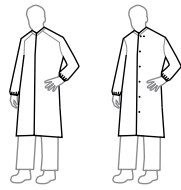


Tyvek®  
IsoClean®  
IC181 p. 25

Tyvek®  
IsoClean®  
IC182 p. 25

Tyvek®  
IsoClean®  
IC253 p. 25

### Frocks and lab coats



Tyvek®  
IsoClean®  
IC264 p. 26

Tyvek®  
IsoClean®  
IC270 p. 26

### Hoods and bouffants



Tyvek®  
IsoClean®  
IC666 p. 26

Tyvek®  
IsoClean®  
IC668 p. 26

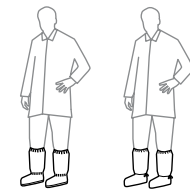
Tyvek®  
IsoClean®  
IC729 p. 26

### Sleeves



Tyvek®  
IsoClean®  
IC501  
p. 26

### Shoe and boot covers



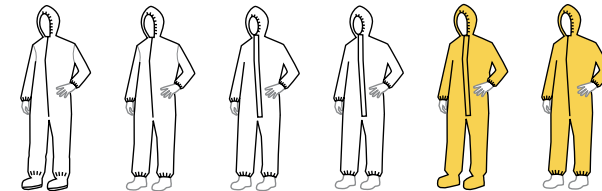
Tyvek®  
IsoClean®  
IC447 p. 26

Tyvek®  
IsoClean®  
IC458 p. 26

# The DuPont CE garment portfolio

## Non-sterile garments

### Coveralls—hooded



Tyvek®  
IsoClean®  
IC105 p. 28

Tyvek®  
IsoClean®  
IC180 p. 28

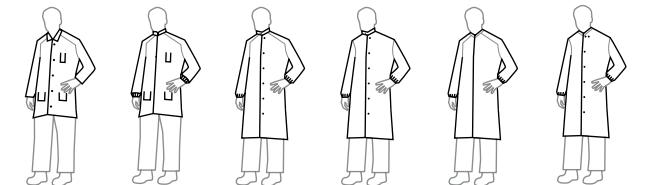
Tyvek®  
600  
TY198 p. 33

Tyvek®  
800  
TJ198 p. 33

Tychem®  
2000  
QC122 p. 35

Tychem®  
2000  
QC127 p. 35

### Frocks and lab coats



Tyvek®  
IsoClean®  
IC224 p. 28

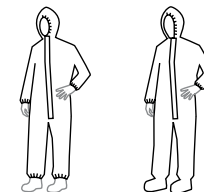
Tyvek®  
IsoClean®  
IC265 p. 28

Tyvek®  
IsoClean®  
IC262 p. 29

Tyvek®  
IsoClean®  
IC263 p. 29

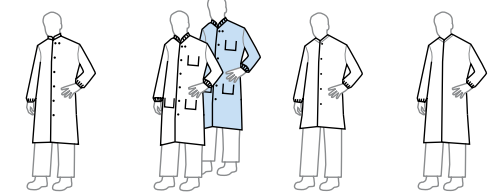
Tyvek®  
IsoClean®  
IC264 p. 29

Tyvek®  
IsoClean®  
IC270 p. 29



Tychem®  
4000  
SL127 p. 37

Tychem®  
4000  
SL122 p. 37



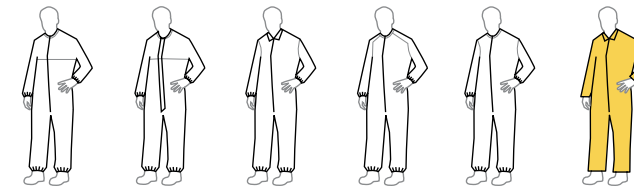
ProShield® 10  
PB267 p. 34

ProShield® 10  
PB219 p. 34

ProClean®  
PC270 p. 32

ProClean®  
PC271 p. 32

### Coveralls—without hood



Tyvek®  
IsoClean®  
IC253 p. 28

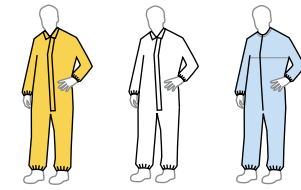
Tyvek®  
IsoClean®  
IC255 p. 28

Tyvek®  
IsoClean®  
IC181 p. 28

Tyvek®  
IsoClean®  
IC182 p. 28

ProClean®  
PC143 p. 32

Tychem®  
2000  
QC120 p. 35



Tychem®  
2000  
QC125 p. 35

Tychem®  
4000  
SL125 p. 37

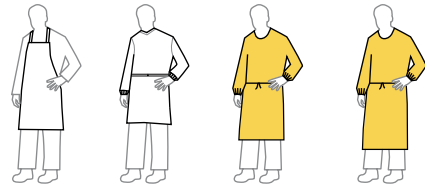
Tyvek®  
Micro-Clean® 2-1-2  
CC252 p. 31



# The DuPont CE garment portfolio

## Non-sterile garments

### Aprons, gowns, and smocks

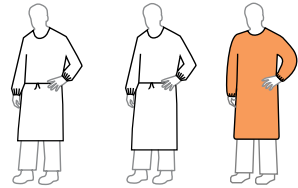


Tyvek®  
400  
TY273  
p. 33

Tyvek®  
IsoClean®  
IC701  
p. 29

Tychem®  
2000  
QC275  
p. 36

Tychem®  
2000  
QC278  
p. 36



Tychem®  
4000  
SL275  
p. 37

Tychem®  
4000  
SL278  
p. 37

Tychem®  
6000 FR  
TP275  
p. 38

### Face veils



Cleanroom  
PP741  
p. 30

# The DuPont CE garment portfolio

## Non-sterile garments

### Hoods and bouffants

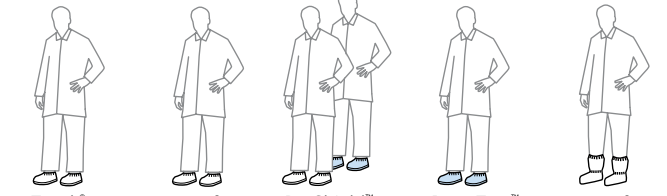


Tyvek®  
IsoClean®  
IC666  
p. 30

Tyvek®  
IsoClean®  
IC668  
p. 30

Tyvek®  
IsoClean®  
IC729  
p. 30

### Shoe and boot covers



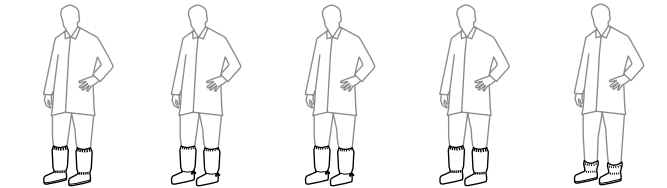
Tyvek®  
IsoClean®  
IC451  
p. 31

Tyvek®  
IsoClean®  
IC461  
p. 31

ProShield™ 30  
PE440  
p. 34

Dura-Trac™  
DT440  
p. 34

Tyvek®  
IsoClean®  
IC444  
p. 31



Tyvek®  
IsoClean®  
IC447  
p. 31

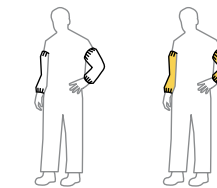
Tyvek®  
IsoClean®  
IC457  
p. 31

Tyvek®  
IsoClean®  
IC458  
p. 31

ProClean®  
PC444  
p. 32

ProShield® 30  
PE444  
p. 34

### Sleeves



Tyvek®  
IsoClean®  
IC501  
p. 30

Tychem®  
2000  
QC500  
p. 36



## Clean-processed and sterile garments

**NOTE** Please substitute your size for XX when ordering.  
See page 7 for full part number description.



**Coverall**  
IC253

### Tyvek® IsoClean®

Made from Tyvek® brand flashspun polyolefin protective material

Unique, patented flash-spinning process creates a barrier to dry particles, microorganisms, and non-hazardous liquids

Comfortable, lightweight, and durable

Garments available gamma sterilized to an SAL of 10<sup>-6</sup>

Serged or bound seams with covered elastic options

Bound seam garments offer highest particle barrier within DuPont CE product portfolio

Traceability on all sterilized apparel

Gripper™ soles offer a higher level of slip resistance than standard PVC soles

### Coverall

○ IC105SWHXX0025CS

Serged seams  
Standard hood  
Elastic hood opening  
Set sleeve  
Zipper closure  
Elastic wrists  
Elastic ankles  
Attached thumb loops  
Attached boots with PVC soles  
25/cs  
MD-5X



### Coverall

○ IC182BWHXX0025CS

Bound seams  
Bound neck  
Raglan sleeve  
Zipper closure  
Elastic wrists  
Elastic ankles  
25/cs  
SM-4X



### Coverall

○ IC253BWHXX0025CS

Bound seams  
Bound neck  
Dolman sleeve  
Zipper closure  
Elastic wrists  
Elastic ankles  
25/cs  
SM-7X



### Coverall

○ IC254BWHXX0025CS

Bound seams  
Bound neck  
Dolman sleeve  
Zipper closure  
Elastic wrists  
Elastic ankles  
Snaps for aseptic donning  
25/cs  
SM-4X



### Coverall

○ IC255BWHXX0025CS

Bound seams  
Bound neck  
Dolman sleeve  
Storm flap  
Zipper closure  
Elastic wrists  
Elastic ankles  
Thumb loop  
25/cs  
SM-6X



# Clean-processed and sterile garments



Tyvek® IsoClean®

Frock  
IC270

**NOTE** Please substitute your size for XX when ordering.  
See page 7 for full part number description.

**Frock**

○ IC264SWHXX0030CS

- Serged seams
- Bound neck
- Raglan sleeve
- Zipper closure
- Elastic wrists
- A-line
- 30/cs
- SM-4X



**Frock**

○ IC270BWHXX0030CS

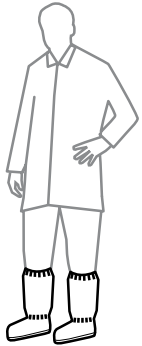
- Bound seams
- Bound neck
- Set sleeve
- Snap closure (6 + 1 adjustable)
- Elastic wrists
- 30/cs
- SM-4X



**Boot cover**

○ IC447SWHXX0100CS

- Serged seams
- Elastic openings
- Elastic ankles
- Gripper™ sole
- 18" high
- 100/cs
- MD-2X



**Boot cover**

○ IC458BWHXX0100CS

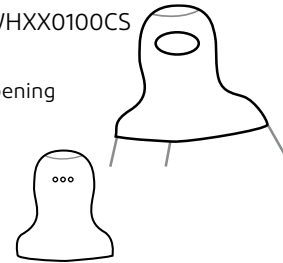
- Bound seams
- Elastic openings
- Ties at ankles
- Gripper™ sole
- 18" high
- 100/cs
- SM-XL



**Hood**

○ IC666BWHXX0100CS

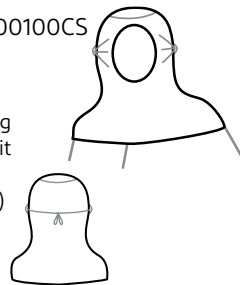
- Bound seams
- Bound hood opening (eyes only)
- Snaps for fit
- Bound bottom
- 100/cs
- MD-LG



**Hood**

○ IC668BWH000100CS

- Bound seams
- Full face opening
- Bound hood opening
- Ties with loops for fit
- 100/cs
- Universal sizing (00)



**Bouffant**

○ IC729SWH000250CS

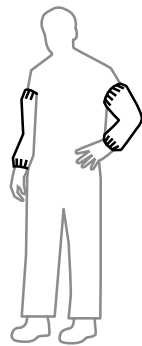
- Serged seams
- Elastic headband
- 21.5" diameter
- 250/cs
- Universal sizing (00)



**Sleeves**

○ IC501BWH000100CS

- Bound seams
- Elastic openings
- 18" length
- 100/cs
- Universal sizing (00)



Sterile garments

# Sterile garments



**Coverall**  
IC253

## Tyvek® IsoClean®

Made from Tyvek® brand flashspun polyolefin protective material

Unique, patented flash-spinning process creates a barrier to dry particles, microorganisms, and non-hazardous liquids

Comfortable, lightweight, and durable

Garments available gamma sterilized to an SAL of 10<sup>-6</sup>

Serged or bound seams with covered elastic options

Bound seam garments offer highest particle barrier within DuPont CE product portfolio

Traceability on all sterilized apparel

Gripper™ soles offer a higher level of slip resistance than standard PVC soles

**NOTE** Please substitute your size for XX when ordering. See page 7 for full part number description.

### Coverall

○ IC108SWHXX0025TS

- Serged seams
- Respirator fit hood¹
- Elastic hood opening
- Set sleeve
- Zipper closure
- Elastic wrists
- Elastic ankles
- Attached thumb loops
- Attached boots with PVC soles
- Double-bagged
- 25/cs
- SM-6X



### Frock

○ IC262SWHXX00300S

- Serged seams
- High mandarin collar w/adjustable snaps
- Raglan sleeve
- Snap closure (6)
- Elastic wrists
- Generous cut
- 30/cs
- MD-3X



### Coverall

○ IC253BWHXX00250S

- Bound seams
- Bound neck
- Dolman sleeve
- Zipper closure
- Elastic wrists
- Elastic ankles
- 25/cs
- SM-5X



### Sleeves

○ IC501BWH0001000S

- Bound seams
- Elastic openings
- 18" length
- 100/cs
- Universal sizing (00)



### Boot cover

○ IC457SWHXX01000S

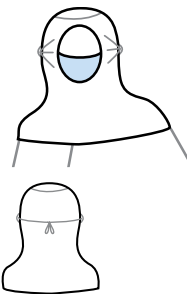
- Serged seams
- Elastic openings
- Ties at ankles
- PVC sole
- 18" high
- 100/cs
- SM-XL



### Hood/mask

● 9820

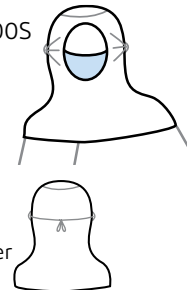
- Separate hood/mask combination
- Bound seams
- Bound head opening
- Ties with loops for fit
- White hood
- Blue face mask
- Pleated polyethylene outer
- 7" wide mask
- Individually packaged
- 100/cs
- Universal sizing (00)



### Hood/mask

● IC669BWH0001000S

- Integrated hood/mask combination
- Bound seams
- Bound head opening
- Ties with loops for fit
- White hood
- Blue face mask
- Pleated polyethylene outer
- 7" wide mask
- Individually packaged
- 100/cs
- Universal sizing (00)



# Sterile garments



**Coverall**  
CC252B

## Tyvek® Micro-Clean® 2-1-2

Made from Tyvek® brand flashspun polyolefin protective material

Coated on both sides with proprietary 2-1-2 blue polymeric resin

Antistatic treated

Garments available gamma sterilized to an SAL of 10<sup>-6</sup>

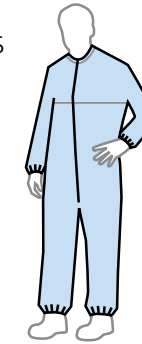
Traceability on all sterilized apparel

**NOTE** Please substitute your size for XX when ordering. See page 7 for full part number description.

### Coverall

● CC252BBUXX00250S

- Bound seams
- Bound neck with loop at center back
- Dolman sleeve
- Zipper closure
- Elastic wrists
- Elastic ankles
- 25/cs
- SM-5X





## Clean-processed garments

**NOTE** Please substitute your size for XX when ordering.  
See page 7 for full part number description.



**Coverall, hood, and boot covers**  
IC181S  
IC668B  
IC447S

**Coverall**

○ IC105SWHXX00250C

- Serged seams
- Standard hood
- Elastic hood opening
- Set sleeve
- Zipper closure
- Elastic wrists
- Elastic ankles
- Attached thumb loops
- Attached boots with PVC soles
- 25/cs
- MD-3X



**Coverall**

○ IC181SWHXX00250C

- Serged seams
- Standard collar
- Set sleeve
- Zipper closure
- Elastic wrists
- Elastic ankles
- 25/cs
- SM-4X



**Coverall**

○ IC182BWHXX00250C

- Bound seams
- Bound neck
- Raglan sleeve
- Zipper closure
- Elastic wrists
- Elastic ankles
- 25/cs
- SM-4X



**Coverall**

○ IC253BWHXX00250C

- Bound seams
- Bound neck
- Dolman sleeve
- Zipper closure
- Elastic wrists
- Elastic ankles
- 25/cs
- SM-5X



**Tyvek® IsoClean®**

Made from Tyvek® brand flashspun polyolefin protective material

Unique, patented flash-spinning process creates a barrier to dry particles, microorganisms, and non-hazardous liquids

Comfortable, lightweight, and durable

Serged or bound seams with covered elastic options

Bound seam garments offer highest particle barrier within DuPont CE product portfolio

Gripper™ soles offer a higher level of slip resistance than standard PVC soles

## Clean-processed garments



**Frock**  
IC270

Tyvek® IsoClean®

**NOTE** Please substitute your size for XX when ordering.  
See page 7 for full part number description.

### Frock

○ IC264SWHXX00300C

Serged seams  
Bound neck  
Raglan sleeve  
Zipper closure  
Elastic wrists  
A-line  
30/cs  
SM-4X



### Frock

○ IC270BWHXX00300C

Bound seams  
Bound neck  
Set sleeve  
Snap closure  
(6 + 1 adjustable)  
Elastic wrists  
30/cs  
SM-4X



### Boot cover

○ IC447SWHXX01000C

Serged seams  
Elastic openings  
Elastic ankles  
Gripper™ sole  
18" high  
100/cs  
MD-XL



### Boot cover

○ IC458BWHXX01000C

Bound seams  
Elastic openings  
Ties at ankles  
Gripper™ sole  
18" high  
100/cs  
MD-XL



### Sleeves

○ IC501BWH0001000C

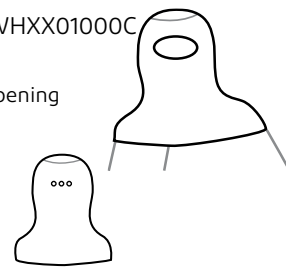
Bound seams  
Elastic openings  
18" length  
100/cs  
Universal sizing (00)



### Hood

○ IC666BWHXX01000C

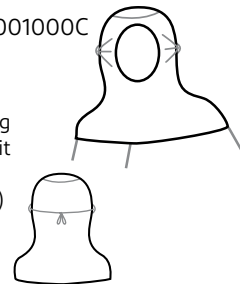
Bound seams  
Bound hood opening  
(eyes only)  
Snaps for fit  
Bound bottom  
100/cs  
MD-LG



### Hood

○ IC668BWH0001000C

Bound seams  
Full face opening  
Bound hood opening  
Ties with loops for fit  
100/cs  
Universal sizing (00)



### Bouffant

○ IC729SWH0002500C

Serged seams  
Elastic headband  
21.5" diameter  
250/cs  
Universal sizing (00)



Non-sterile garments

## Non-sterile garments



**Coverall**  
IC181S

**NOTE** Please substitute your size for XX when ordering.  
See page 7 for full part number description.

### Coverall

○ IC105SWHXX002500

Serged seams  
Standard hood  
Elastic hood opening  
Set sleeve  
Zipper closure  
Elastic wrists  
Elastic ankles  
Attached thumb loops  
Attached boots with PVC soles  
25/cs  
MD-3X



### Coverall

○ IC180SWHXX002500

Serged seams  
Standard hood  
Elastic hood opening  
Set sleeve  
Zipper closure  
Elastic wrists  
Elastic ankles  
25/cs  
MD-3X



### Coverall

○ IC181SWHXX002500

Serged seams  
Standard collar  
Set sleeve  
Zipper closure  
Elastic wrists  
Elastic ankles  
25/cs  
SM-8X



### Coverall

○ IC182BWHXX002500

Bound seams  
Bound neck  
Raglan sleeve  
Zipper closure  
Elastic wrists  
Elastic ankles  
25/cs  
SM-4X



### Coverall

○ IC253BWHXX00250B

Bound seams  
Bound neck  
Dolman sleeve  
Zipper closure  
Elastic wrists  
Elastic ankles  
25/cs  
SM-5X



### Coverall

○ IC255BWHXX00250B

Bound seams  
Bound neck  
Dolman sleeve  
Storm flap  
Zipper closure  
Elastic wrists  
Elastic ankles  
Thumb loops  
25/cs  
SM-7X



### Lab coat

○ IC224SWHXX00300B

Serged seams  
Laydown collar  
Raglan sleeve  
Snap closure (5)  
Pockets (1 chest pencil,  
2 lower front)  
30/cs  
SM-2X



### Lab coat

○ IC265SWHXX00300B

Serged seams  
Mandarin collar  
Raglan sleeve  
Front zipper closure  
Knit cuffs  
Pockets (1 left chest pencil,  
2 lower front)  
30/cs  
SM-4X



### Tyvek® IsoClean®

Made from Tyvek® brand flashspun polyolefin protective material

Unique, patented flash-spinning process creates a barrier to dry particles, microorganisms, and non-hazardous liquids

Comfortable, lightweight, and durable

Serged or bound seams with covered elastic options

Bound seam garments offer highest particle barrier within DuPont CE product portfolio

Gripper™ soles offer a higher level of slip resistance than standard PVC soles

## Non-sterile garments



**Tyvek® IsoClean®**

**Frock**  
IC270

**NOTE** Please substitute your size for XX when ordering.  
See page 7 for full part number description.

### Frock

○ IC262SWHXX00300B

Serged seams  
High mandarin collar  
w/adjustable snaps  
Raglan sleeve  
Snap closure (6)  
Elastic wrists  
Generous cut  
30/cs  
SM-4X



### Frock

○ IC263SWHXX00300B

Serged seams  
High mandarin collar w/snap  
Set sleeve  
Snap closure (6)  
Elastic wrists  
30/cs  
SM-4X



### Frock

○ IC264SWHXX00300B

Serged seams  
Bound neck  
Raglan sleeve  
Zipper closure  
Elastic wrists  
A-line  
30/cs  
SM-4X



### Frock

○ IC270BWHXX003000

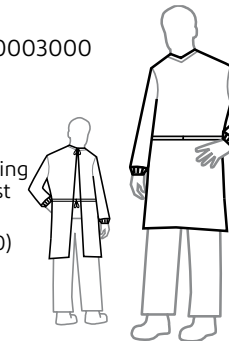
Bound seams  
Bound neck  
Set sleeve  
Snap closure (6 + 1 adjustable)  
Elastic wrists  
30/cs  
SM-4X



### Gown

○ IC701SWH00003000

Serged seams  
Bound neck w/ties  
Knit cuffs  
Bound ties originating  
at center front waist  
30/cs  
Universal sizing (00)



## Non-sterile garments

**NOTE** Please substitute your size for XX when ordering.  
See page 7 for full part number description.



**Sleeve**  
IC501

### Sleeves

○ IC501BWH0001000B

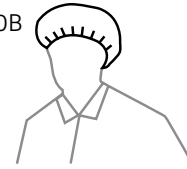
Bound seams  
Elastic openings  
18" length  
100/cs  
Universal sizing (00)



### Bouffant

○ IC729SWH0002500B

Serged seams  
Elastic headband  
21.5" diameter  
250/cs  
Universal sizing (00)

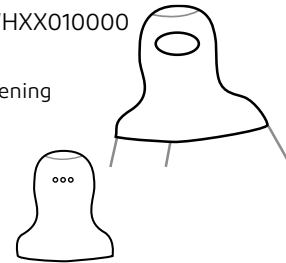


## Tyvek® IsoClean®

### Hood

○ IC666BWHXX010000

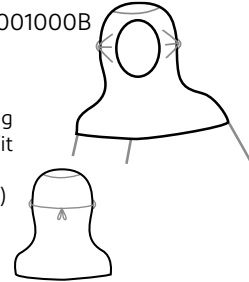
Bound seams  
Bound hood opening  
(eyes only)  
Snaps for fit  
Bound bottom  
100/cs  
MD-LG



### Hood

○ IC668BWH0001000B

Bound seams  
Full face opening  
Bound hood opening  
Ties with loops for fit  
100/cs  
Universal sizing (00)

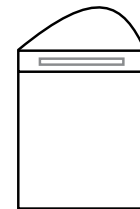


## Polypropylene

### Cleanroom face veil

○ PP7410WH000150BH

Elastic head band  
Metal nose piece  
150/cs  
Universal sizing (00)



## Non-sterile garments

**NOTE** Please substitute your size for XX when ordering.  
See page 7 for full part number description.



**Shoe cover**  
IC451

## Tyvek® IsoClean®

### Boot cover

○ IC444SWHXX02000B

Serged seams  
Elastic opening  
Elastic ankles  
PVC sole  
15" high  
200/cs  
MD-XL



### Boot cover

○ IC447SWHXX01000B

Serged seams  
Elastic opening  
Elastic ankles  
Gripper™ sole  
18" high  
100/cs  
SM-XL



### Boot cover

○ IC457SWHXX01000B

Serged seams  
Elastic opening  
Ties at ankles  
PVC sole  
18" high  
100/cs  
SM-XL



### Boot cover

○ IC458BWHXX01000B

Bound seams  
Elastic opening  
Ties at ankles  
Gripper™ sole  
18" high  
100/cs  
MD-XL



### Shoe cover

○ IC451SWHXX01000B

Serged seams  
Elastic opening  
Gripper™ sole  
5" high  
100/cs  
SM-XL



### Shoe cover

○ IC461SWHXX03000B

Serged seams  
Elastic opening  
PVC sole  
Elastic toe  
5" high  
300/cs  
SM-XL



## Tyvek® Micro-Clean® 2-1-2

Made from Tyvek® brand flashspun polyolefin protective material

Unique, patented flash-spinning process creates an inherent barrier to dry particles, microorganisms, and non-hazardous liquids

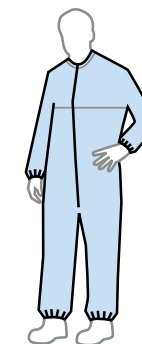
Breathable, lightweight, and durable

Traceability on all sterilized apparel

### Coverall

● CC252BBUX0025PI

Bound seams  
Bound neck with loop at center back  
Dolman sleeve  
Zipper closure  
Elastic wrists  
Elastic ankles  
25/cs  
SM-4X





## Non-sterile garments



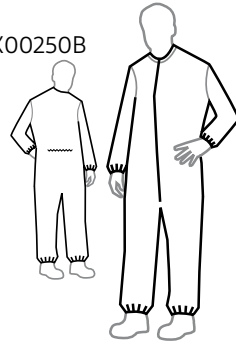
**Coverall**  
PC143

**NOTE** Please substitute your size for XX when ordering.  
See page 7 for full part number description.

### Coverall

PC143SWHXX00250B

Serged seams  
Bound neck  
Set sleeve  
Zipper closure  
Enclosed elastic at back  
Elastic wrists  
Elastic ankles  
25/cs  
SM-4X



### Frock

PC270SWHXX00300B

Serged seams  
Bound neck  
Set sleeve  
Elastic wrists  
Snap closure (5)  
30/cs  
SM-4X



### Frock

PC271SWHXX00300B

Serged seams  
Bound neck  
Set sleeve  
Zipper closure  
Elastic wrists  
30/cs  
SM-4X



### Boot cover

PC444SWHXX01000B

Serged seams  
Elastic opening  
Elastic ankles  
PVC sole  
18" height  
100/cs  
MD-XL



### ProClean®

Microporous composite fabric

Non-hazardous liquid and dry particulate barrier protection for cleanroom applications

Serged seams

## Non-sterile garments



**Coverall**  
TJ198T

### Tyvek® 800

Tyvek® 800 garments combine resistance to low-concentration, water-based, inorganic chemicals (even under pressure) with the durability of Tyvek® thanks to their innovative fabric technology and enhanced garment design

Chemical protective clothing, Category III, Type 3-B, 4-B, 5-B, and 6-B

Protection against infective agents (EN 14126), including resistance to penetration by blood and body fluids using synthetic blood (ISO 16603)

Suitable for applications such as industrial cleaning; chemical packaging and redistribution; waste treatment and disposal; environmental remediation and many others

Tyvek® 800 is white

PI = Packaged individually

### Coverall

TJ198TWHXX0025PI

Taped seam  
Attached hood (respirator fit)<sup>1</sup>  
Storm flap  
Elastic wrists  
Elastic ankles  
CE certified  
Category III type 3-B, 4-B, 5-B, and 6-B  
25/cs  
SM-7X



**Coverall**  
TY198T

### Tyvek® 600

Tyvek® 600 garments are composed of flashspun high-density polyethylene, which creates a unique, nonwoven material available only from DuPont

Tyvek® 600 Type 4/5/6 coveralls offer the following safety and comfort benefits:

Chemical protective clothing, Category III, Type 4-B, 5-B, and 6-B

Protection against infective agents (EN 14126), including resistance to penetration by blood and body fluids using synthetic blood (ISO 16603)

Fabric and seams offer chemical permeation barrier to low concentration water-based inorganic chemicals

Tyvek® 600 is white

PI = Packaged individually

### Coverall

TY198TWHXX0025PI

Taped seam  
Attached hood (respirator fit)<sup>1</sup>  
Storm flap  
Elastic wrists  
Elastic ankles  
CE certified  
Category III type 4-B, 5-B, and 6-B  
25/cs  
SM-7X



**Apron**  
TY273

### Tyvek® 400

Tyvek® fabric is composed of flashspun high-density polyethylene, which creates a unique nonwoven material available only from DuPont

Tyvek® 400 fabric provides an ideal balance of protection, durability, and comfort compared to any limited-use fabric technology

Tyvek® 400 fabric's durability delivers a consistently better barrier, even after wear and abrasion

Tyvek® 400 is white

### Apron

TY273BWH00010000

Bound seams  
Bound neck  
Tie closure  
Tyvek® ties at waist  
100/cs  
Universal sizing (00)



## Non-sterile garments

**NOTE** Please substitute your size for XX when ordering.  
See page 7 for full part number description.

### ProShield® 10

Made from polypropylene SMS fabric  
Fabric resists non-hazardous dry particle penetration

Air permeability helps keep wearer comfortable

Serged seams

Available in blue and white

#### Lab coat

○ PB219SWHXX00300B

Serged seams  
Knit collar  
Set sleeve  
Snap closure (6 + 1 adjustable)  
Knit cuffs  
Pockets (1 left chest pencil, 2 lower front)  
30/cs  
SM-5X



### ProShield® 30

Spunbonded polypropylene with polyethylene film coating

Slip resistance—both wet and dry

#### Shoe cover

● PE440SBUX020000

Serged seams  
Elastic opening  
5.5" height  
200/cs  
LG-XL



### Dura-Trac™

Spunbonded polypropylene with polyethylene film coating

Slip resistance—both wet and dry

#### Shoe cover

● DT440SBU0003000B

Serged seams with heat seal  
Elastic opening  
Elastic toe, heel  
6.5" height  
300/cs  
LG-XL



#### Lab coat

● PB219SBUX00300B

Serged seams  
Knit collar  
Set sleeve  
Snap closure (6 + 1 adjustable)  
Knit cuffs  
Pockets (1 left chest pencil, 2 lower front)  
30/cs  
SM-5X



#### Shoe cover

○ PE440SWHXX020000

Serged seams  
Elastic opening  
5.5" height  
200/cs  
MD-XL



#### Frock

○ PB267SWHXX00300B

Serged seams  
Mandarin collar  
Set sleeve  
Snap closure (6 + 1 adjustable)  
Knit cuffs  
Enclosed elastic wrists  
30/cs  
SM-4X



#### Boot cover

○ PE444SWHXX010000

Serged seams  
Elastic opening  
Elastic ankles  
13" height  
100/cs  
LG-XL



## Non-sterile garments

**NOTE** Please substitute your size for XX when ordering.  
See page 7 for full part number description.



Coverall  
QC122SYL

### Tychem® 2000

Light liquid splash protection

Used extensively in the petroleum; pulp and paper; food and chemical processing; and pharmaceutical industries

Tychem® 2000 is polyethylene-coated Tyvek® fabric

Flexible, durable, and lightweight

Tychem® 2000 provides at least 30 minutes of protection against >40 chemical challenges

When used with masks and gloves, can help reduce the risk of cross-contamination in pandemic preparedness activities

#### Coverall

● QC122BYLXX001200

Bound seams  
Attached hood  
Zipper closure  
Storm flap with tape closure  
Elastic wrists  
Attached socks²  
12/cs  
MD-6X



#### Coverall

● QC122SYLXX001200

Serged seams  
Attached hood  
Zipper closure  
Elastic wrists  
Attached socks²  
12/cs  
MD-8X



#### Coverall

● QC127BYLXX001200

Bound seams  
Attached hood  
Zipper closure  
Storm flap  
Elastic wrists  
Elastic ankles  
12/cs  
MD-6X



#### Coverall

● QC127SYLXX001200

Serged seams  
Attached hood  
Zipper closure  
Elastic wrists  
Elastic ankles  
12/cs  
SM-7X



#### Coverall

● QC125BYLXX001200

Bound seams  
Collar  
Zipper closure  
Storm flap with tape closure  
Elastic wrists  
Elastic ankles  
12/cs  
MD-6X



#### Coverall

● QC125SYLXX001200

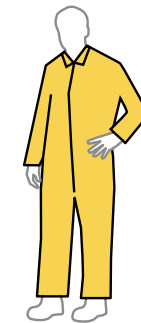
Serged seams  
Collar  
Zipper closure  
Elastic wrists  
Elastic ankles  
12/cs  
MD-7X



#### Coverall

● QC120SYLXX001200

Serged seams  
Collar  
Zipper closure  
12/cs  
MD-7X



## Non-sterile garments

**NOTE** Please substitute your size for XX when ordering.  
See page 7 for full part number description.

### Tychem® 2000

#### Apron

● QC275BYLXX002500

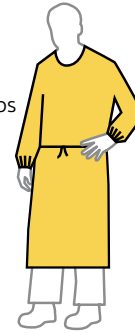
Bound seams  
Waist ties  
Elastic wrists  
Knee length apron/gown  
Open back  
44" long  
25/cs  
SM-4X



#### Apron

● QC278BYL00001200

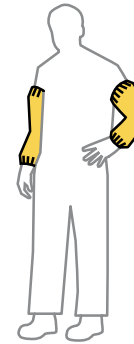
Bound seams  
Bound yoke neck without snaps  
Sleeved apron  
Waist ties  
Elastic wrists  
52" long  
12/cs  
Universal sizing (00)



#### Sleeves

● QC500BYLXX02000B

Bound seams  
Tunneled elastic wrists  
Elastic biceps  
18" length  
200/cs  
Universal sizing (00)



## Non-sterile garments

**NOTE** Please substitute your size for XX when ordering.  
See page 7 for full part number description.



**Coverall**  
SL122T

#### Coverall

○ SL122TWHXX000600

Taped seams  
Attached hood  
Zipper closure  
Storm flap with tape closure  
Elastic wrists  
Attached socks<sup>2</sup>  
6/cs  
MD-6X



#### Coverall

○ SL122BWHXX001200

Bound seams  
Attached hood  
Zipper closure  
Storm flap with tape closure  
Elastic wrists  
Attached socks<sup>2</sup>  
12/cs  
MD-7X



#### Coverall

○ SL127TWHXX000600

Taped seams  
Attached hood  
Zipper closure  
Storm flap with tape closure  
Elastic wrists  
Elastic ankles  
6/cs  
MD-7X



#### Coverall

○ SL125BWHXX001200

Bound seams  
Collar  
Zipper closure  
Storm flap with tape closure  
Elastic wrists  
Elastic ankles  
12/cs  
SM-6X



### Tychem® 4000

Effective protection against a range of chemicals

Rugged and durable

Tychem® 4000 is white for high visibility

Tychem® 4000 provides at least 30 minutes of protection against >120 chemical challenges

When used with masks and gloves, can help reduce the risk of cross-contamination in pandemic preparedness activities

#### Apron

○ SL278BWHXX001200

Bound seams  
Bound yoke neck without snaps  
Attached long sleeves  
Waist ties  
Elastic wrists  
52" long  
12/cs  
Universal sizing (00)



#### Apron

○ SL275TWHXX002500

Taped seams  
Raw edge neck with snaps  
Attached long sleeves  
Waist ties  
Elastic wrists  
44" long  
25/cs  
SM-4X



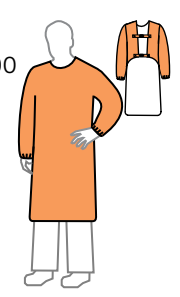
# Non-sterile garments



**NOTE** Please substitute your size for XX when ordering. See page 7 for full part number description.

**Apron**

TP275TORXX000200  
 Taped seams  
 Two buckle closure system  
 45" long  
 2/cs  
 SM-4X



**Apron**  
TP275TOR

**Tychem® 6000 FR**

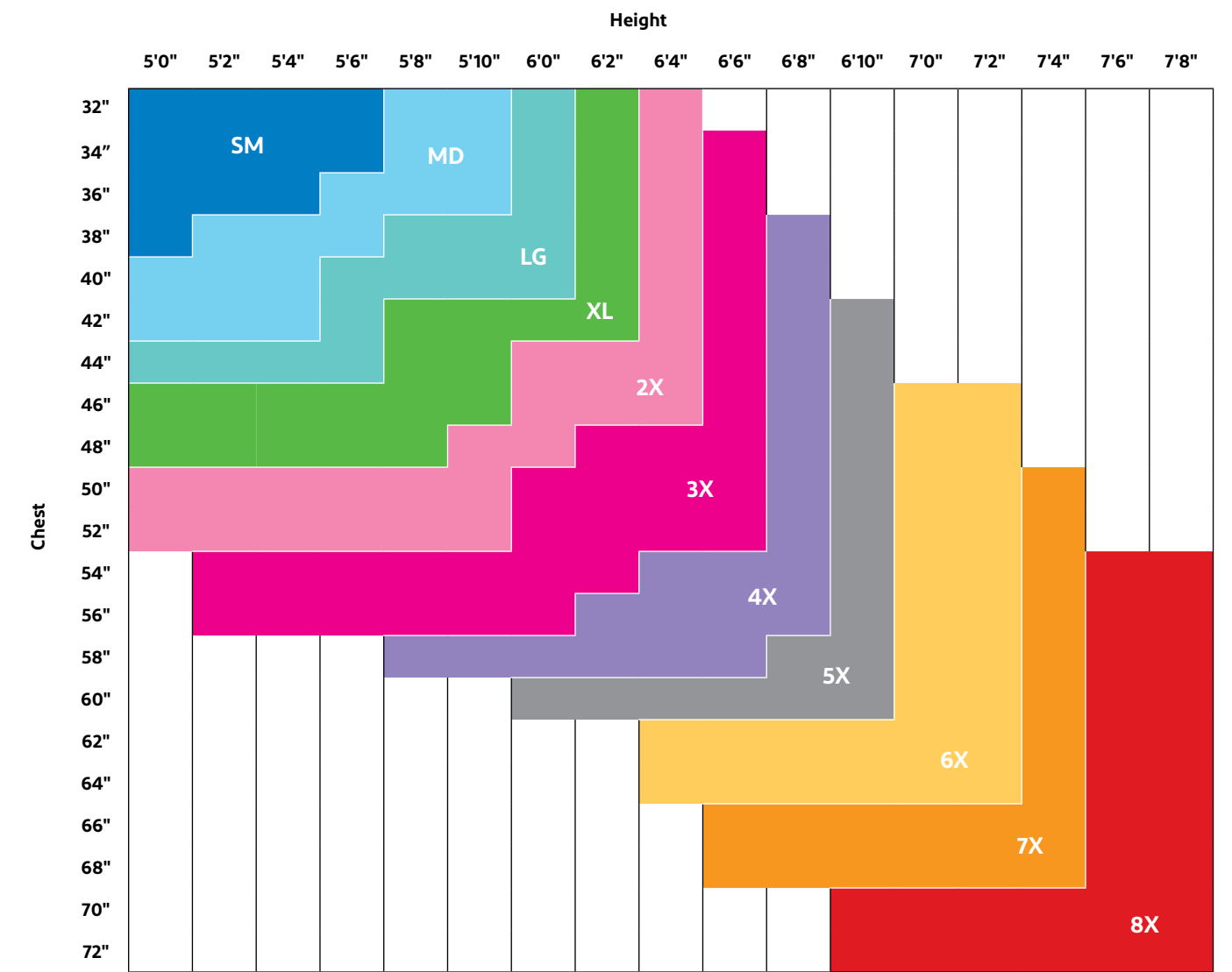
Provides triple hazard protection from chemicals, flash fire, and electric arc, combining the trusted chemical protection of Tychem® with the flame and arc flash protection of Nomex® into a single garment

Constructed for heavy use, yet lightweight and easy to wear

Tychem® 6000 FR provides at least 30 minutes of protection against >180 chemical challenges

# Sizing chart for DuPont Controlled Environments garments

Use this chart to determine what size garment is right for you. Sizes are based on an individual's height and chest size.



Garment may shrink during cleaning process. Please use your best judgment to determine the most appropriate size to order based on this chart.

## Featured products summary



### Tyvek® IsoClean®

Made from Tyvek® brand flashspun polyolefin protective material

Unique, patented flash-spinning process creates a barrier to dry particles, microorganisms, and non-hazardous liquids

Comfortable, lightweight, and durable

Garments available gamma sterilized to an SAL of 10<sup>-6</sup>

Serged or bound seams with covered elastic options

Bound seam garments offer highest particle barrier within DuPont CE product portfolio

Traceability on all sterilized apparel

Gripper™ soles offer a higher level of slip resistance than standard PVC soles

Tyvek® IsoClean® is white

Seams and closures have less barrier than fabric.

**NOTE** Please substitute your size for XX when ordering. See page 7 for full part number description.

#### Coverall

- IC253BWHXX00250B SM-5X
- IC253BWHXX00250S SM-5X
- IC253BWHXX00250C SM-5X
- IC253BWHXX0025CS SM-7X

Bound seams  
Bound neck  
Dolman sleeve  
Zipper closure  
Elastic wrists  
Elastic ankles  
25/cs



#### Coverall

- IC108SWHXX0025TS
- Serged seams  
Respirator fit hood<sup>1</sup>  
Elastic hood opening  
Set sleeve  
Zipper closure  
Elastic wrists  
Elastic ankles  
Attached thumb loops  
Attached boots with PVC soles  
Double-bagged  
25/cs  
SM-6X



#### Coverall

- IC105SWHXX002500 MD-3X
- IC105SWHXX00250C MD-3X
- IC105SWHXX0025CS MD-4X

Serged seams  
Standard hood  
Elastic hood opening  
Set sleeve  
Zipper closure  
Elastic wrists  
Elastic ankles  
Attached thumb loops  
Attached boots with PVC soles  
25/cs



#### Coverall

- IC182BWHXX002500
- IC182BWHXX00250C
- IC182BWHXX0025CS

Bound seams  
Bound neck  
Raglan sleeve  
Zipper closure  
Elastic wrists  
Elastic ankles  
25/cs  
SM-4X



#### Lab coat

- IC265SWHXX00300B
- Serged seams  
Mandarin collar  
Raglan sleeve  
Front zipper closure  
Knit cuffs  
Pockets (1 left chest pencil, 2 lower front)  
30/cs  
SM-4X



#### Lab coat

- IC224SWHXX00300B
- Serged seams  
Laydown collar  
Raglan sleeve  
Front snap closure (5)  
Pockets (1 left chest pencil, 2 lower front)  
30/cs  
SM-2X



#### Coverall

- IC181SWHXX002500 SM-8X
- IC181SWHXX00250C SM-4X

Serged seams  
Standard collar  
Set sleeve  
Zipper closure  
Elastic wrists  
Elastic ankles  
25/cs



## Featured products summary

**NOTE** Please substitute your size for XX when ordering. See page 7 for full part number description.

#### Frock

- IC270BWHXX003000
- IC270BWHXX00300C
- IC270BWHXX0030CS

Bound seams  
Bound neck  
Set sleeve  
Front snap closure (6 + 1 adjustable)  
Elastic wrists  
30/cs  
SM-4X



#### Boot cover

- IC447SWHXX01000B SM-XL
- IC447SWHXX01000C MD-XL
- IC447SWHXX0100CS MD-2X

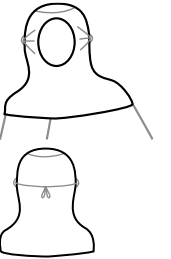
Serged seams  
Elastic openings  
Elastic ankles  
Gripper™ sole  
18" high  
100/cs (50 pairs)



#### Hood

- IC668BWH0001000B
- IC668BWH0001000C
- IC668BWH000100CS

Bound seams  
Full face opening  
Bound hood opening  
Ties with loops for fit  
100/cs  
Universal sizing (00)



#### Frock

- IC264SWHXX00300B
- IC264SWHXX00300C
- IC264SWHXX0030CS

Serged seams  
Bound neck  
Raglan sleeve  
Front zipper closure  
Elastic wrists  
A-line  
30/cs  
SM-4X



#### Boot cover

- IC458BWHXX01000B MD-XL
- IC458BWHXX01000C MD-XL
- IC458BWHXX0100CS SM-XL

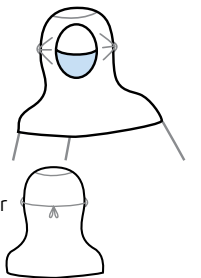
Bound seams  
Elastic openings  
Ties at ankles  
Gripper™ sole  
18" high  
100/cs (50 pairs)



#### Hood/mask

- IC669BWH0001000S

Integrated hood/mask combination  
Bound seams  
Bound head opening  
Ties with loops for fit  
White hood  
Blue face mask  
Pleated polyethylene outer  
7" wide mask  
Individually packaged  
100/cs  
Universal sizing (00)



#### Frock

- IC263SWHXX00300B

Serged seams  
High mandarin collar w/snap  
Set sleeve  
Snap closure (6)  
Elastic wrists  
30/cs  
SM-4X



#### Shoe cover

- IC461SWHXX03000B

Serged seams  
Elastic openings  
PVC sole  
Elastic toe  
5" high  
300/cs (150 pairs)  
SM-XL



#### Sleeves

- IC501BWH0001000B
- IC501BWH0001000C
- IC501BWH0001000S
- IC501BWH000100CS

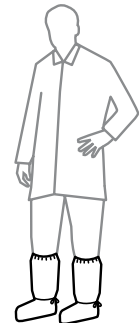
Bound seams  
Elastic openings  
18" length  
100/cs  
Universal sizing (00)



#### Boot cover

- IC457SWHXX01000B
- IC457SWHXX01000S

Serged seams  
Elastic openings  
Ties at ankles  
PVC sole  
18" high  
100/cs (50 pairs)  
SM-XL



#### Shoe cover

- IC451SWHXX01000B

Serged seams  
Elastic openings  
Gripper™ sole  
5" high  
100/cs (50 pairs)  
SM-XL



safespec.dupont.com  
controlledenvironments.dupont.com  
Customer service 1 800 931 3456

safespec.dupont.com  
controlledenvironments.dupont.com  
Customer service 1 800 931 3456

## Featured products summary

**NOTE** Please substitute your size for XX when ordering. See page 7 for full part number description.

### Boot cover—ProShield® 30

○ PE444SWHXX010000

Serged seams  
Elastic opening  
Elastic ankles  
13" height  
100/cs (50 pairs)  
LG-XL

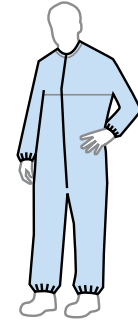


### Coverall—Tyvek® Micro-Clean® 2-1-2

● CC252BBUX00250S  
SM-5X

● CC252BBUX0025PI  
SM-4X

Bound seams  
Bound neck with loop at center back  
Dolman sleeve  
Zipper closure  
Elastic wrists  
Elastic ankles  
25/cs



### Shoe cover—ProShield® 30

● PE440SBUX020000

Serged seams  
Elastic opening  
5.5" height  
200/cs (100 pairs)  
LG-XL



Made from Tyvek® brand flashspun polyolefin protective material

Coated on both sides with proprietary 2-1-2 blue polymeric resin

Antistatic treated

Garments available gamma sterilized to an SAL of 10<sup>-6</sup>

Traceability on all sterilized apparel

### Shoe cover—ProShield® 30

○ PE440SWHXX020000

Serged seams  
Elastic opening  
5.5" height  
200/cs (100 pairs)  
MD-XL



# Tyvek® protective apparel recycling program

Tyvek® is proud to offer a garment recycling program that helps our customers within the continental United States manage used Tyvek® and IsoClean® protective apparel and reduce waste. The program includes setup, collection, transportation, storage, and recycling of garments.

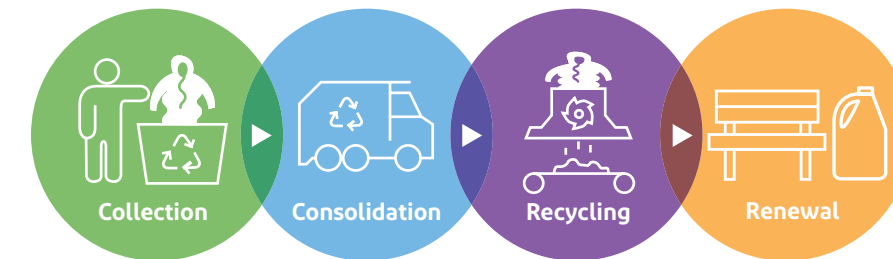
### Why recycle?

The Tyvek® protective apparel recycling program offers the chance to divert garments away from landfills and give them a second life in products like containers, lumber pallets, and park benches.

### Predicted savings

For every case of 25 Tyvek® coveralls that is recycled, 10 lbs. of Tyvek® are diverted from the waste stream and given a second life in products like pallets and park benches. DuPont offers this service for free to qualifying customers. On an annualized usage basis, the savings really add up.

### Recycling process



### DuPont sustainability

Sustainability is at the core of what we do—from reducing our operational footprint and creating market-facing sustainable solutions to addressing the global challenges of the future. This program is yet another example of the DuPont commitment to sustainability. The Tyvek® protective apparel recycling program is easy to participate in and is a cost-effective and responsible choice.

**For more information, call 1 800 931 3456, or contact your local DuPont sales representative. [personalprotection.dupont.com](http://personalprotection.dupont.com)**



Conserve materials and energy



Lower waste-related costs



Increase eligibility for grants and incentives



Boost employee morale



Meet your ISO 14001 goals



Help the environment

**Latex statement:** As of January 1, 2006, DuPont production specifications exclude use of components containing natural rubber latex in the manufacture of DuPont™ Tyvek® IsoClean® and DuPont™ ProClean® garments.

Tyvek® 500, Tyvek® 600 and Tyvek® 800 contain natural rubber latex which may cause allergic reactions in some sensitized individuals. Anyone who begins to exhibit an allergic response during the use of DuPont products should immediately cease using these products and should also be reported to DuPont at 1-800-441-3637 (outside the U.S. 1-302-774-1139).

**Silicone statement:** In the past, DuPont has found that threads and zippers can be the most significant source of silicone oil contamination in garments. DuPont specifies that threads and zippers used in Tyvek® IsoClean® and ProClean® garments be manufactured without the use of silicone oils. Notwithstanding, DuPont cannot guarantee the absence of silicone oils on these garments.

For end users with concerns about contamination with silicone oils or any other contaminants, the best practice is to audit inbound materials, including garments for those contaminants.

This information is based upon technical data that DuPont believes to be reliable. It is subject to revision as additional knowledge and experience become available. It is the user's responsibility to determine the level of toxicity and the proper personal protective equipment needed. The information set forth herein reflects laboratory performance of fabrics, not complete garments, under controlled conditions. This information is intended for use by persons having the technical expertise to undertake evaluation under their own specific end-use conditions, at their own discretion and risk. Anyone intending to use this information should first check that the garment selected is suitable for the intended use. The end-user should discontinue use of garment if fabric becomes torn, worn or punctured, to avoid potential chemical exposure. Since conditions of use are beyond our control, DUPONT MAKES NO WARRANTIES, EXPRESSED OR IMPLIED, INCLUDING BUT NOT LIMITED TO WARRANTIES OF MERCHANTABILITY OR FITNESS FOR A PARTICULAR PURPOSE AND ASSUME NO LIABILITY IN CONNECTION WITH ANY USE OF THIS INFORMATION. This information is not intended as a license to operate under or a recommendation to infringe any trademark, patent or technical information of DuPont or other persons covering any material or its use.

Garments should have slip-resistant or anti-slip materials on the outer surface of boots, shoe covers or other garment surfaces in conditions where slipping could occur. Some Tychem® garments have attached socks made of the garment material. These attached socks must be worn inside protective outer footwear and are not suitable as outer footwear. These attached socks do not have adequate durability or slip resistance to be worn as the outer foot covering.



## DuPont™ SafeSPEC™—we're here to help

Our powerful web-based tool can assist you with finding the appropriate DuPont garments for chemical, controlled environment, thermal, and mechanical hazards.

[safespec.dupont.com](https://safespec.dupont.com)



## DuPont Controlled Environments

[safespec.dupont.com](https://safespec.dupont.com)

[dpp.dupont.com](https://dpp.dupont.com)

[controlledenvironments.dupont.com](https://controlledenvironments.dupont.com)

[in](https://www.linkedin.com/company/dupont-personal-protection) DuPont Personal Protection

[@DuPontPPE](https://twitter.com/DuPontPPE)

In many cases, seams and closures have shorter breakthrough times and higher penetration rates than the fabric. Please contact DuPont for specific data.

**WARNING:** Cleanroom apparel should not be used around heat, flames, sparks or in potentially flammable or explosive environments. Cleanroom fabrics should have slip-resistant materials on the outer sole of boots, shoe covers or other garment surfaces in conditions where slipping could occur.

**WARNING:** Tyvek®, ProShield®, and most Tychem® garments, including Tychem® 2000 Tape, should not be used around heat, flames, sparks or in potentially flammable or explosive environments.

Only Tychem® 6000 FR and Tychem® 10000 FR garments are designed and tested to help reduce injury during escape from a flash fire. ProShield® 6 SFR and Tychem® 2000 SFR garments offer secondary flame resistance and are designed to be used over primary flame-resistant garments, including but not limited to, Nomex® Essential (Nomex® IIIA) or Nomex® Comfort garments. In addition, for ProShield® 6 SFR and Tychem® 2000 SFR hooded garments, primary flame-resistant hood/balaclava should be worn. [Users of Tychem® 10000 FR, Tychem® 6000 FR, Tychem® 2000 SFR, and ProShield® 6 SFR garments should not knowingly enter an explosive environment.](#) Consult the Tychem® User Manual, located on our website, for instructions on proper use, care and maintenance of your Tychem® garments.

<sup>1</sup> **Respirator fit hoods** are designed with a longer zipper, extending to the chin for complete coverage of the neck area. **Standard hoods** only extend to the neck.

<sup>2</sup> Garments made of Tyvek® should have slip-resistant or anti-slip materials on the outer surface of boots, shoe covers or other garment surfaces in conditions where slipping could occur.



## Certified Industrial Hygienist team

A DuPont Certified Industrial Hygienist can conduct a job hazard assessment to help you determine the best DuPont garment for a specific hazard.